

BOMBARDIER GLOBAL 5000

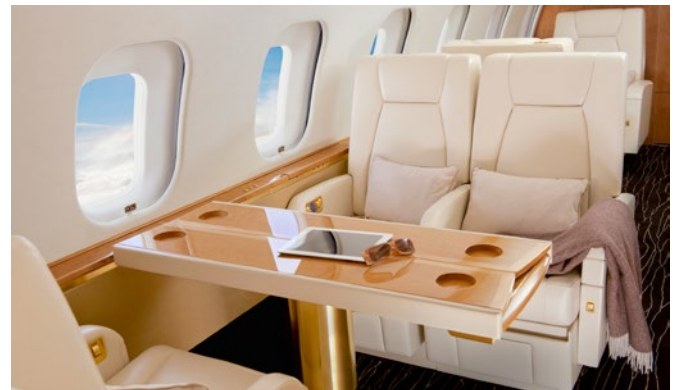


OVERVIEW

As one of the widest and most spacious cabins among supe-large business jets, the powerful and versatile Bombardier Global 5000 offers an impressive combination of speed and performance.

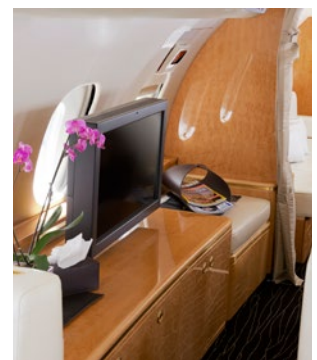
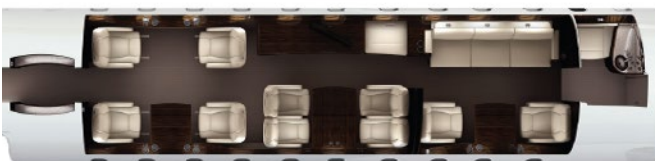
On-board amenities keep passengers comfortable, entertained and connected.

Featuring 3 cabin zones and the option to sleep up to 7 guests, the Global 5000 is an exceptional choice for both business and lifestyle travel.



SPECIFICATIONS

Passenger capacity	Up to 13
Crew	2 pilots, 1 cabin crew
Range	5,200 nm (9,360 km)
Maximum speed	904 km/h
Maximum altitude	15,545 m (51,000 ft)
Cabin width	2.41 m (7 ft 11 in)
Cabin height	1.88 m (6 ft 16 in)
Cabin length	12.41 m (40 ft 9 in)
Max speed	0.89 Mach
Cruise speed	0.85 Mach



BOMBARDIER GLOBAL 5000



BAGGAGE COMPARTMENT

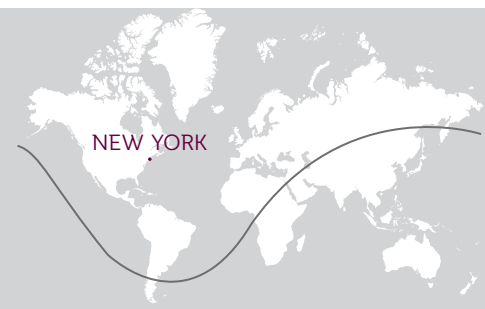
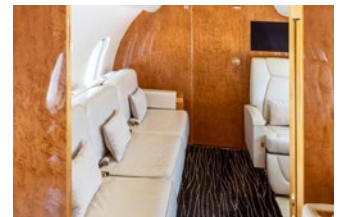
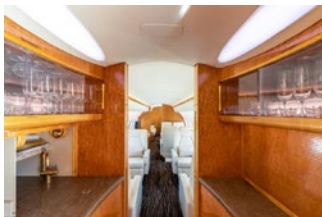
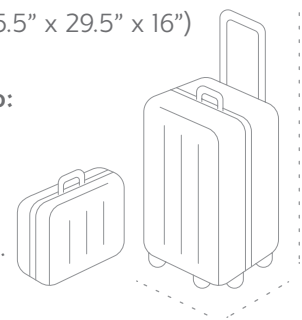
Maximum allowable cargo weight	453 kg
Maximum volume	5.24m ³
Maximum height	182 cm
Maximum width	150 cm
Maximum length	152 cm
Maximum weight per bag	32 kg
Maximum number of bags allowed	13

STANDARD BAG DIMENSIONS

Bag size should not exceed:
90 cm x 75 cm x 43 cm (35.5" x 29.5" x 16")

Larger / Bulky items up to:
182 cm x 75 cm x 65 cm
(75" x 29.5" x 25.5")

All dimensions include handle, pocket, and wheels.



RANGE MAP FOR BOMBARDIER GLOBAL 5000

■ MACH 0.85 | 10 hrs

TEL (+974) 4022 1700 | EMAIL request@qatarexec.com.qa | qatarexec.com.qa

